

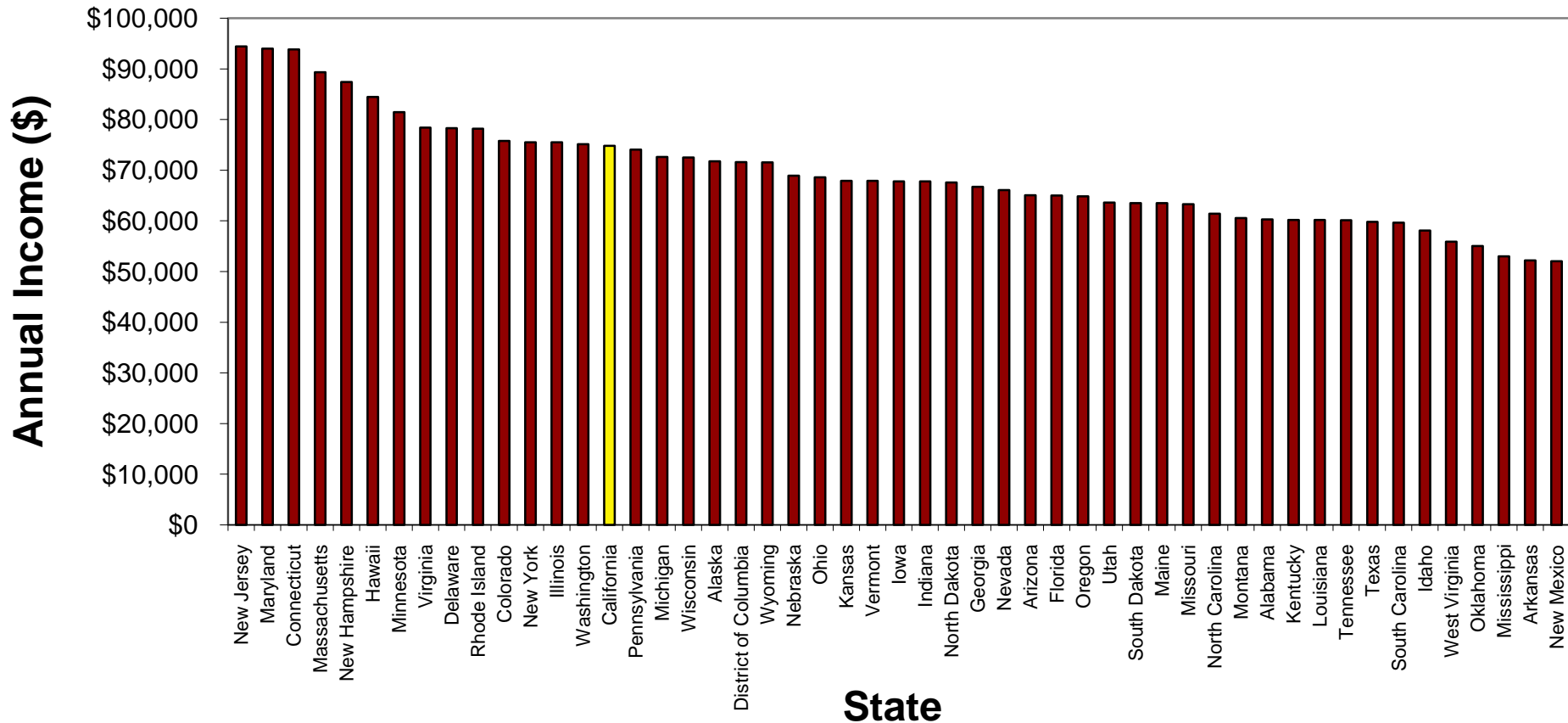
Remarks to Lusk Boards: Some Facts about California

Richard K. Green
Lusk Chair in Real Estate
University of Southern California
October 21, 2009

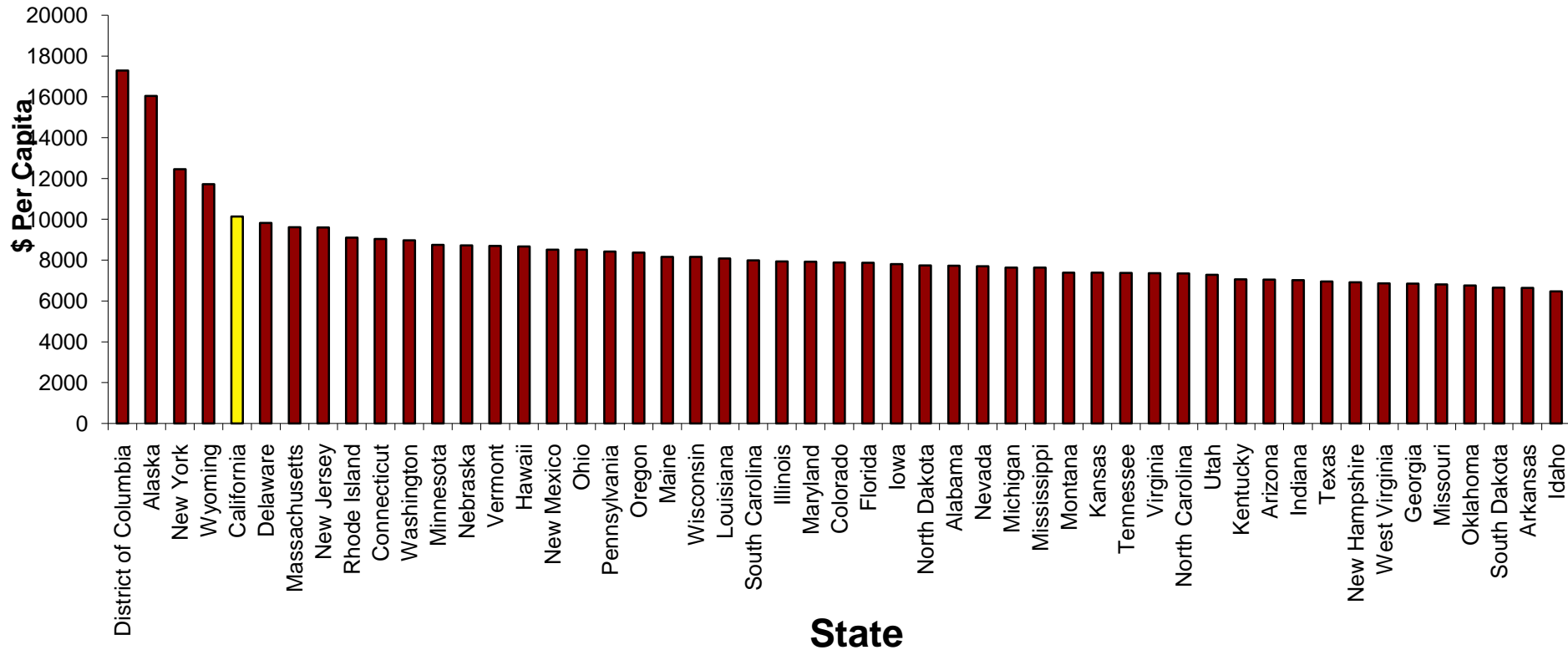
Agenda

- How well off are we?
- How much do we (i.e. government) spend?
- On what do we spend it?
- Is there any cause for good feeling?

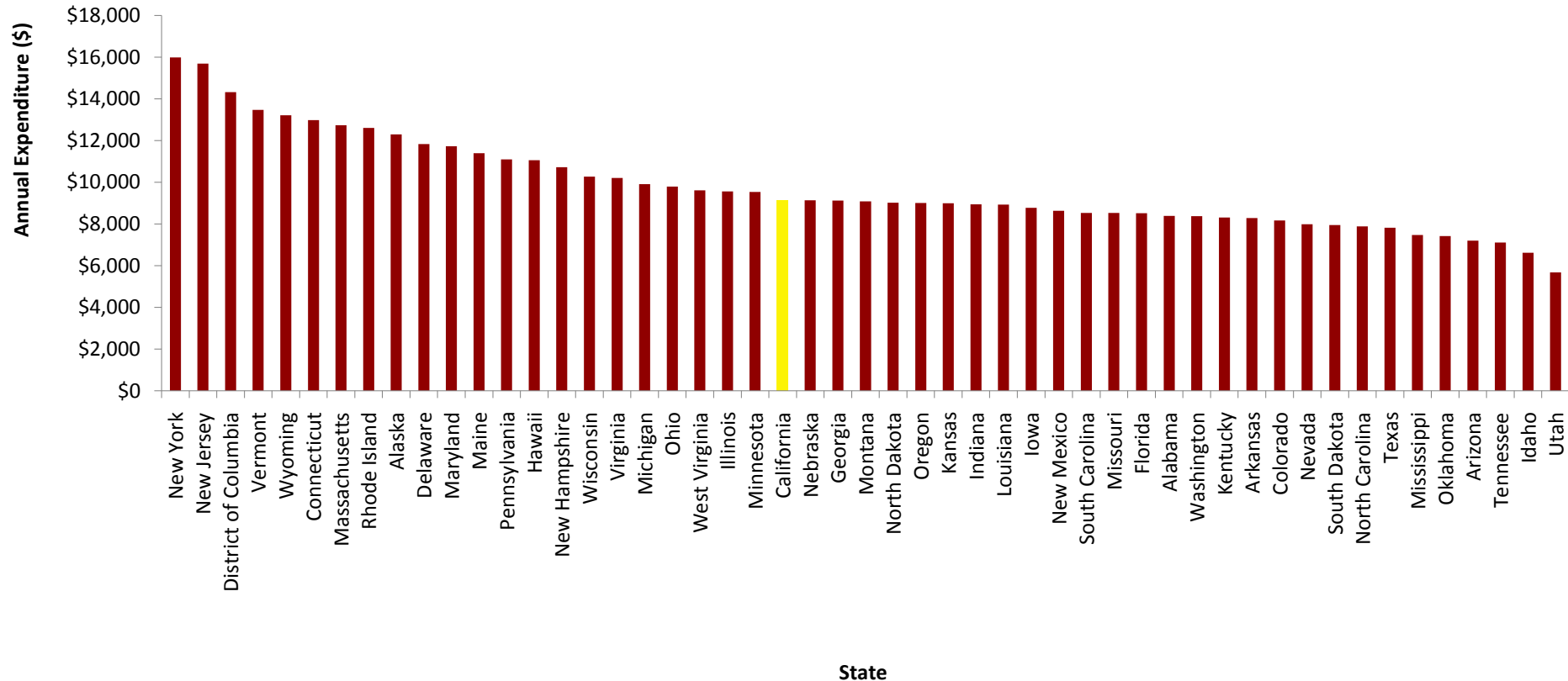
State Median Income, Family of 4



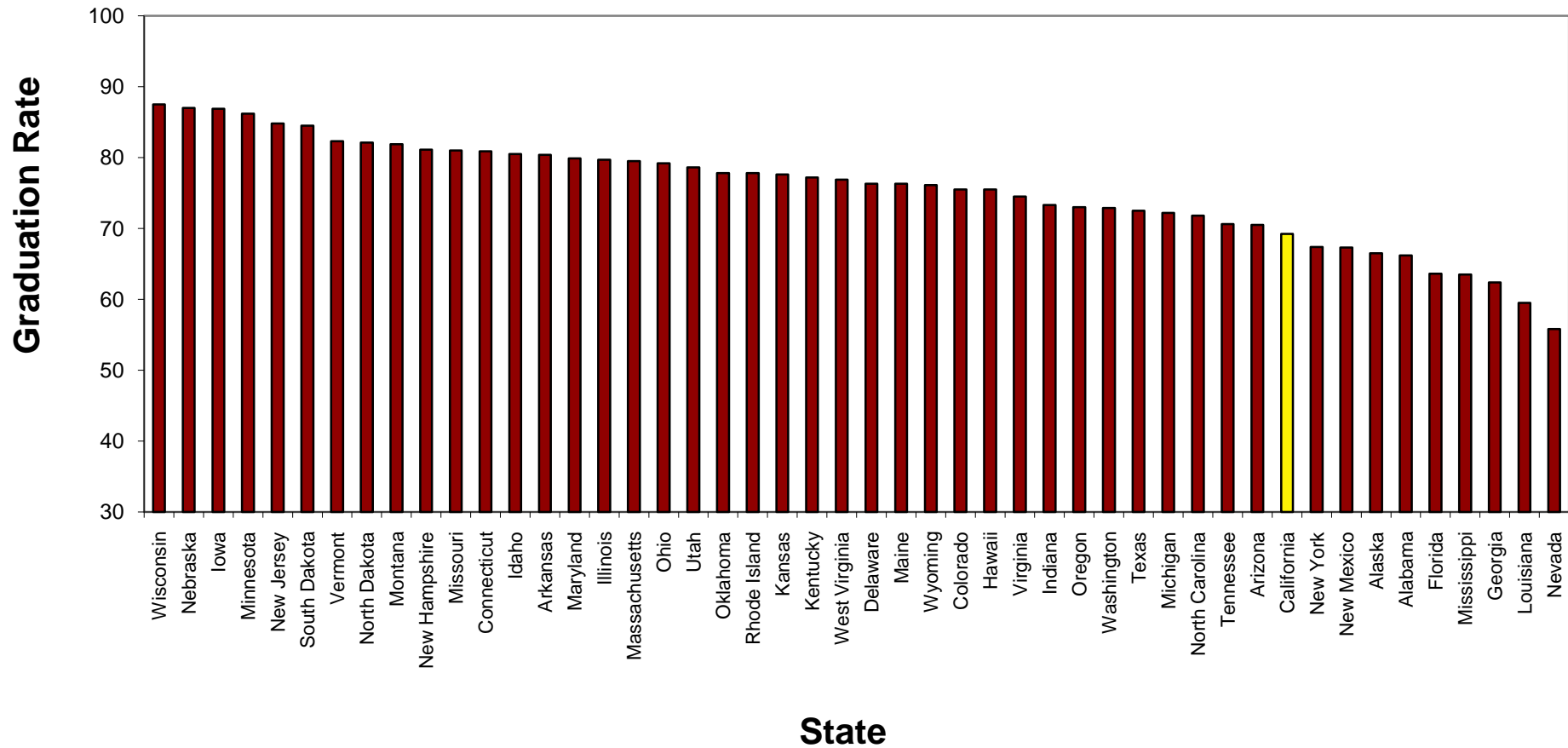
State and Local Government Spending Per Capita



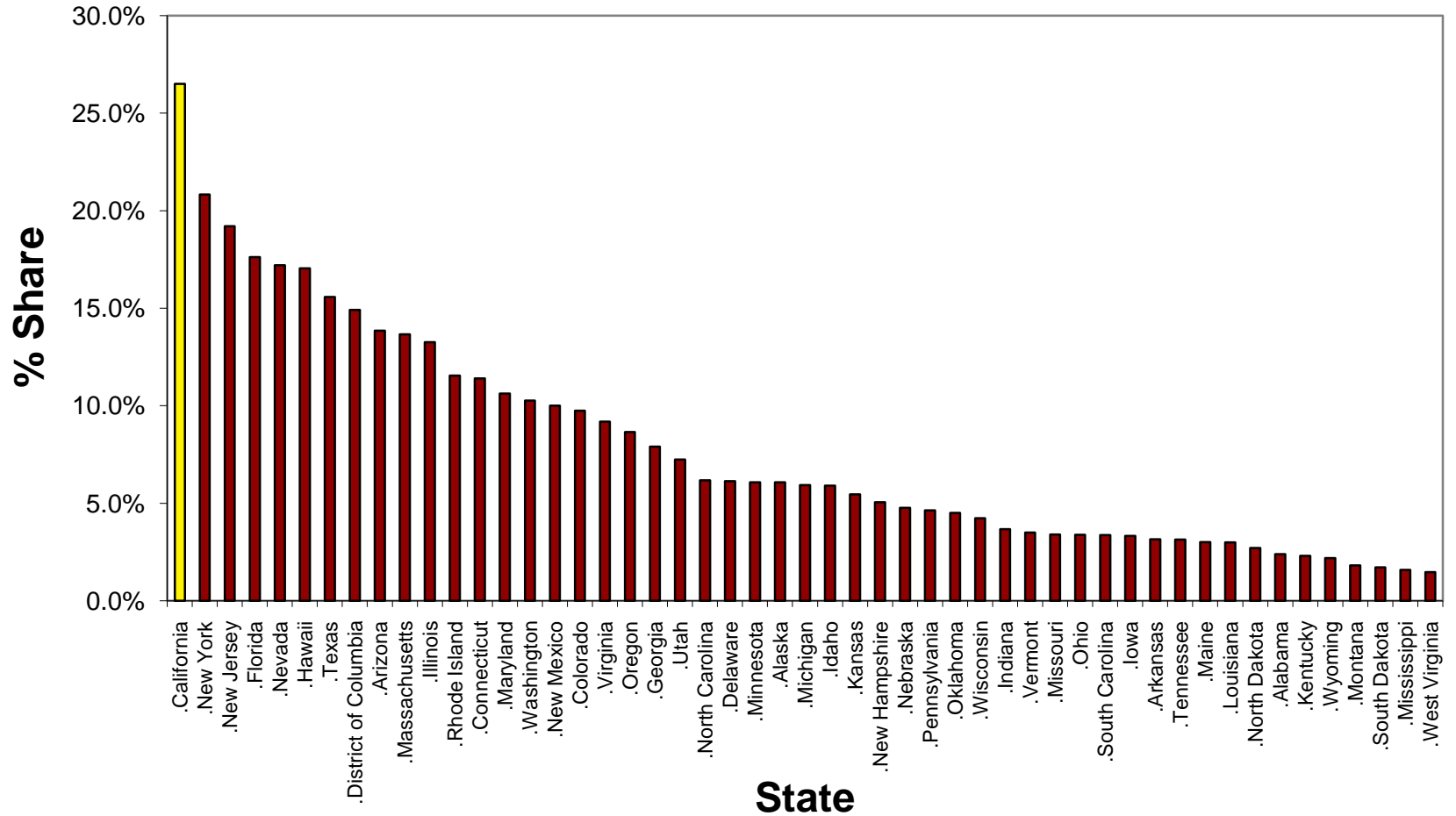
K-12 Expenditure Per Pupil, 2006/2007



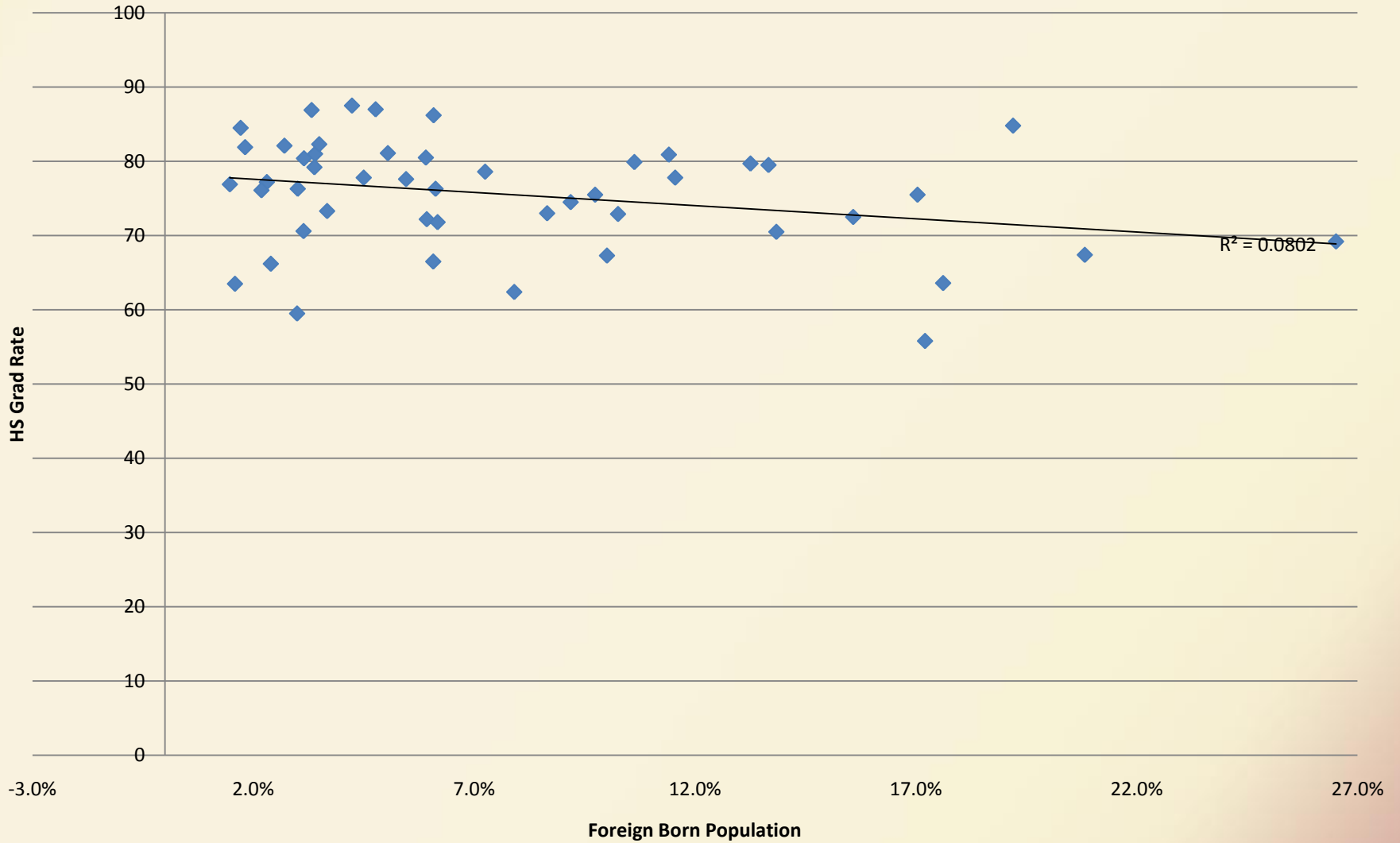
Averaged High School Graduation Rate 2005-2006



Foreign Born Share of Population (%)

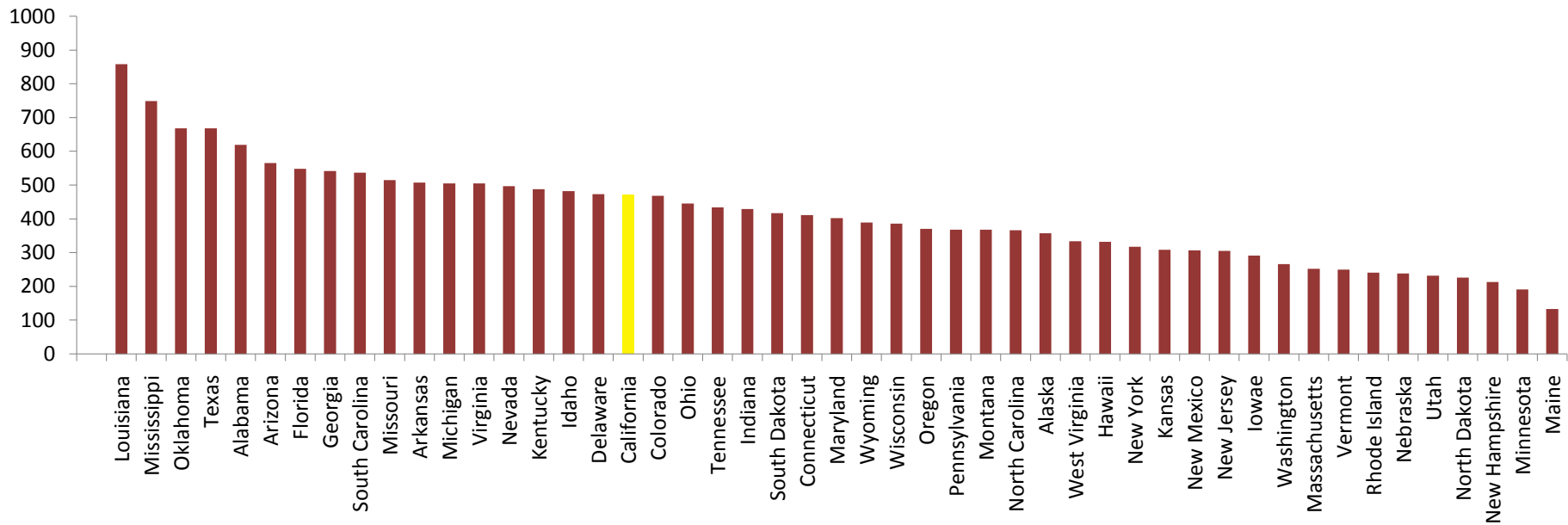


Foreign Born Population and Educational Attainment

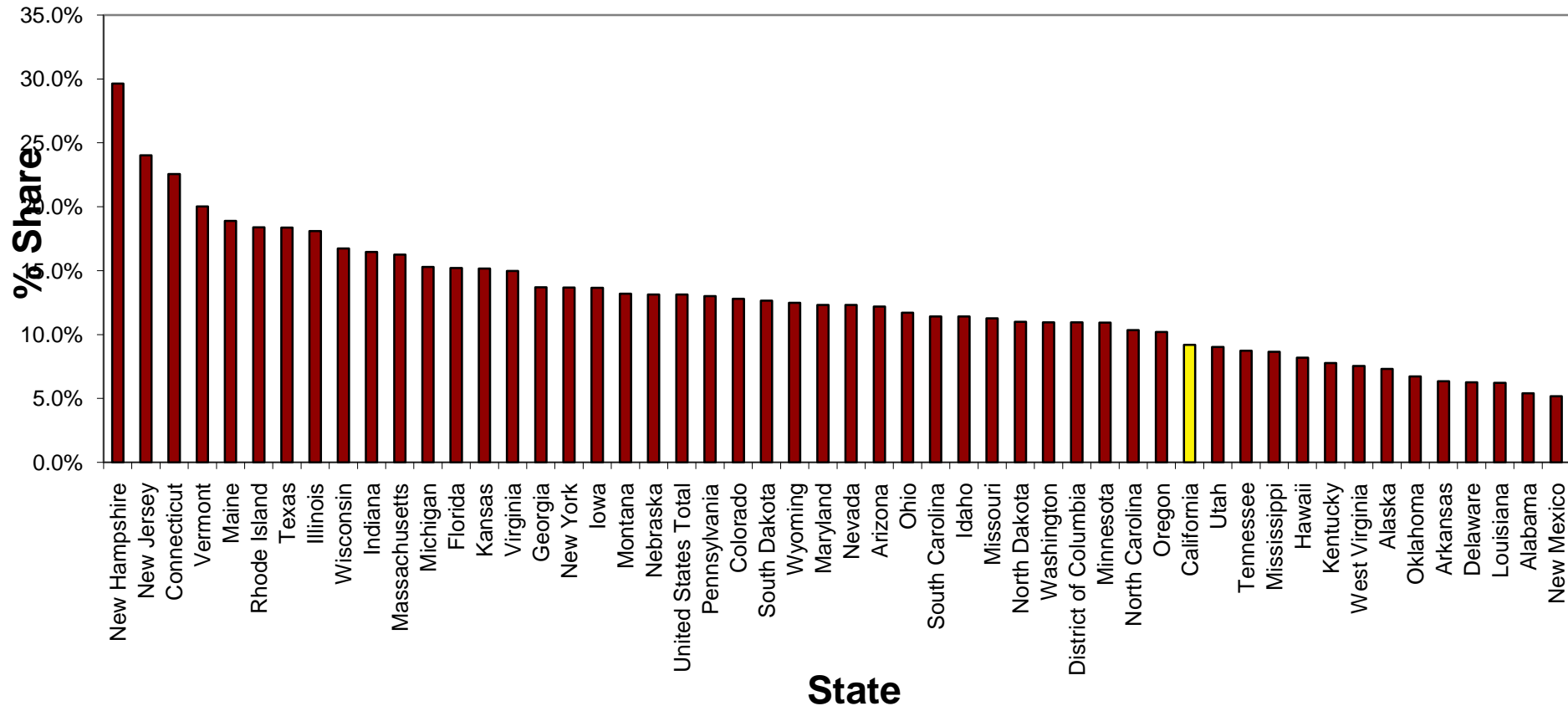


R² = 0.0802

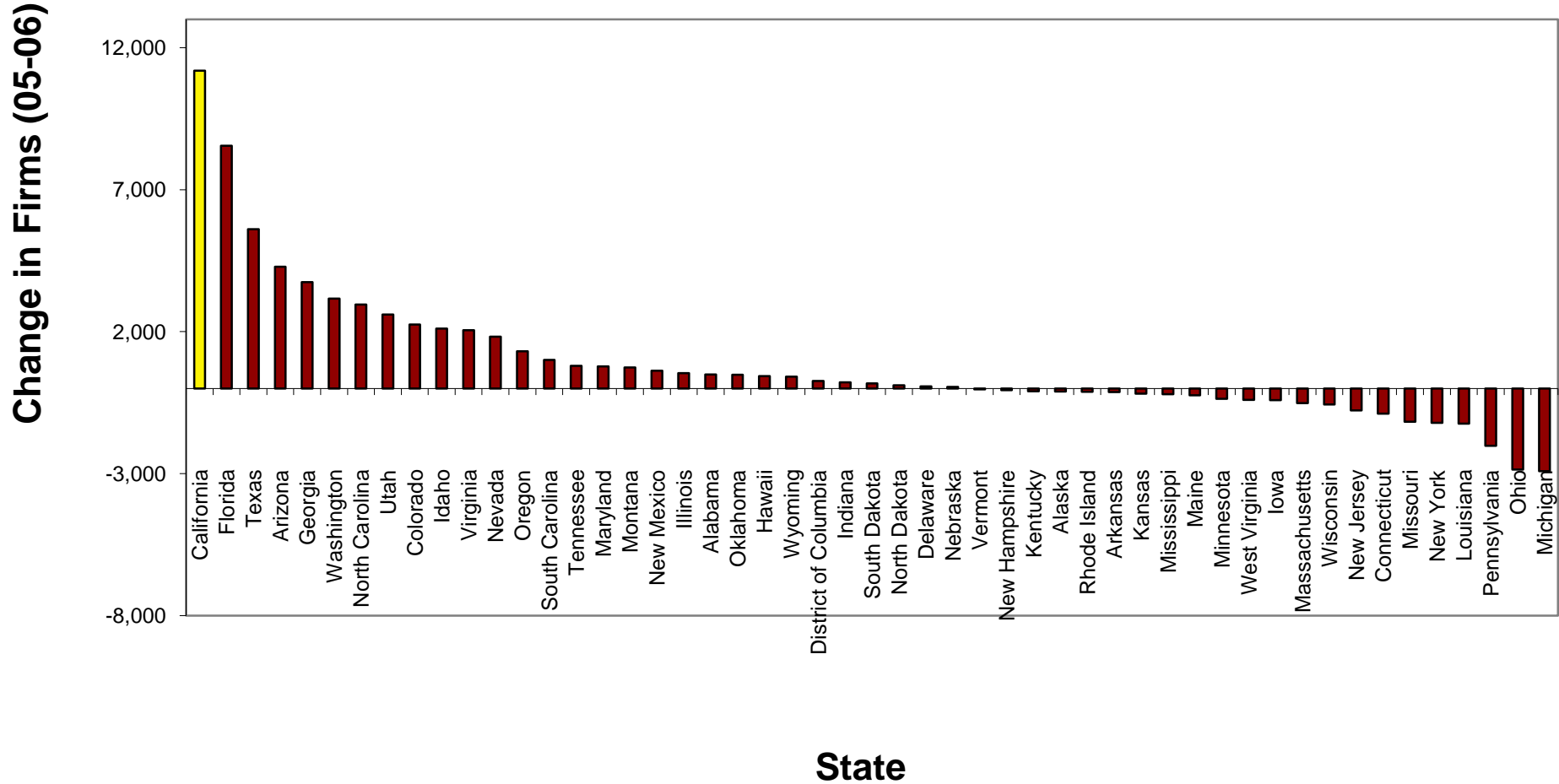
Imprisonment Rate (per 100,000 residents)



Share of State/Local Revenue from Property Tax



Net Firm Creation by State 2005-2006



Location Quotient by County: 2008

